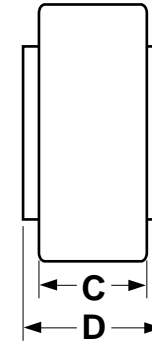
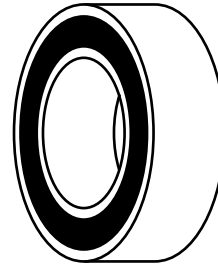
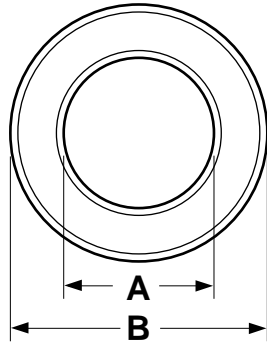


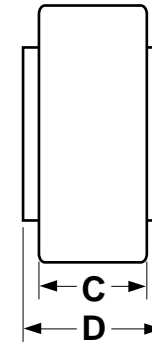
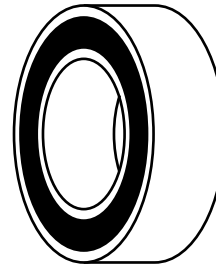
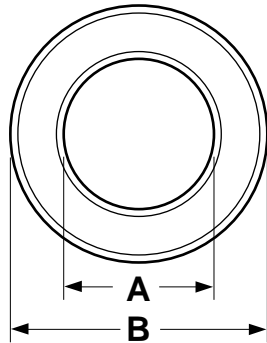
COMPRESSOR CLUTCH PULLEY BEARINGS



ALL DIMENSIONS ARE IN MILLIMETERS

SUNAIR # NSK	SUNAIR # NACHI	SUNAIR # AFTERMARKET	COMPRESSOR APPLICATION	I.D. A	O.D. B	TK1 C	TK2 D
BG-200	BG-400	-	<ul style="list-style-type: none"> • Chrysler C171 / A590 / 6C17 / 6CA17 • Ford FS6 / HR980 • Nipp. 6E171 / 6E171A / 6P127 / 6P127B / 6P134 / 6P148 / 6C / 6CA (Some 10P13 / 10P15 / 10P17) • Mitsubishi FX105V W/ Pitts Clutch 	40	62	20.6	24
BG-201	BG-401	BG-601	<ul style="list-style-type: none"> • Ford FS10 / FX15 • York / CCI / Tecumseh Pitts Clutch • Diesel Kiki / DKS16H • Nihon DKV14B / NVR140S • Behr Bosch Wing Cell 	30	55	23	
BG-202	BG-402	BG-602	<ul style="list-style-type: none"> • GM A6 / R4 / DA6 / HR6 / HR6HE / HT6 / HD6 / HU6 / V5 / V7 • Keihin 150R / 150L • Seiko Seiki SS Series (Some Models) 	40	62	20.6	
BG-203	BG-403	BG-603	<ul style="list-style-type: none"> • Nipp. 10PA15 / 10PA17 / 10PA20 / TV12C / TV12EC / TV12SC / TV14C / 10S17C 	30	52	22	
BG-204	BG-404	BG-604	<ul style="list-style-type: none"> • Diesel Kiki DKS15BH (Small) DKS17G / DKS15CH • Diesel Kiki DKS13S / DCW17D Some • Seltec TM13HD / TM15HD / TM08 • Sanden SD505 / 708 / 709 / 709CA / 7H15 / 7V16 / TR90 • Matsushita SA W/ OEM Nose / NL W/ Aftermarket Nose • Nihon DCV11A, DKV14A / C / D 	35	55	20	
BG-205	BG-405	BG-605	<ul style="list-style-type: none"> • Nihon DKV14C (Some W/ Large Bearing) • Hitachi MJS170 • Nippondenso 10P13 / 15 / 17C (Some Models) 	40	62	24	

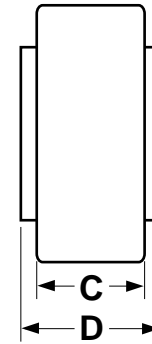
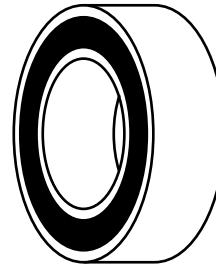
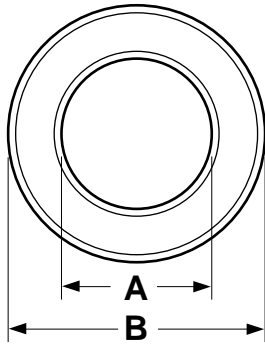
COMPRESSOR CLUTCH PULLEY BEARINGS



ALL DIMENSIONS ARE IN MILLIMETERS

SUNAIR # NSK	SUNAIR # NACHI	SUNAIR # AFTERMARKET	COMPRESSOR APPLICATION	I.D. A	O.D. B	TK1 C	TK2 D
BG-205	BG-405	BG-605	<ul style="list-style-type: none"> • Sanden SD507 / 508 Large / 510 / SD7H15 • Seiko Seiki SS811 	40	62	24	24
BG-206	BG-406	-	Nippondenso 10PO8E	38	54	17	
BG-207	BG-407	-	<ul style="list-style-type: none"> • Nipp. 10P17 (Audi / Mercedes) Inner Race Protrudes 2MM • Sanden SD5H13 / 5H14 	40	57	20	24
BG-208	BG-408	BG-608	<ul style="list-style-type: none"> • Delphi CVC • Mitsubishi FX80 • Sanden 7B10 (Mini) TRF090 / TRF105 • Seiko Seiki SS (Some Models) 	35	50	20	
BG-209	BG-409	-	<ul style="list-style-type: none"> • Sanden (VW Only) • Mitsubishi (Some Models) 	40	57	24	
BG-210	-	-	<ul style="list-style-type: none"> • Pitts 6" & 7" • Pitts 6" Mini • Sanden SD508 / 510 W/ Small I.D. Bearing 	30	62	24	
BG-211	BG-411	-	<ul style="list-style-type: none"> • Matsushita NL W/ OEM Nose • Panasonic Rotary Vane • York Rotary Vane VR Series • Seiko Seiki SS96D1 	32	55	23	
BG-212	-	-	• Sanden TR70 W/ Notch	30	47	18	
BG-213	BG-413	-	• Sanden TR70 W/O Notch	30	47	22	
BG-214	BG-414	-	<ul style="list-style-type: none"> • Mitsubishi MSC105C W/ 6 Groove Poly V • Mitsubishi MSC90C W/ 5 Groove Poly V 	40	66	24	
BG-215	-	-	• Chrysler V2 / RV2	30	62	27	

COMPRESSOR CLUTCH PULLEY BEARINGS



ALL DIMENSIONS ARE IN MILLIMETERS

SUNAIR # NSK	SUNAIR # NACHI	SUNAIR # AFTERMARKET	COMPRESSOR APPLICATION	I.D. A	O.D. B	TK1 C	TK2 D
BG-216	BG-416	-	<ul style="list-style-type: none"> • Diesel Kiki DKS13G / DKS15BH Large / DCW17 • York YA 	35	62	28	
-	BG-417	BG-617	<ul style="list-style-type: none"> • Nippondenso Mercedes 7SB-16C • Rover 6CA • Delphi HU6 / CVC 	35	52	22	
BG-218	-	-	<ul style="list-style-type: none"> • Hitachi SWP123 / 167 - 2 Required • Ogura 5" Mini - 2 Required • Ogura 6" Mini - 2 Required 	30	55	13	
-	BG-418	-	• Sanden TR70 Shaft Bearing	10	26	16	
-	BG-419	-	<ul style="list-style-type: none"> • Mitsubishi FX80 • Sanden TR90 / TRF090 Shaft Bearing 	12	28	16	
-	BG-420	-	Ford VF2 Scroll Pulley Bearing	30	45	23	
-	BG-421	-	Diesel Kiki DCW17B Pulley Bearing (DCW17 Some)	35	62	24	
BG-222	-	-	Idler Pulley Bearing (6203)	17	40	12	
-	BG-423	-	<ul style="list-style-type: none"> • Sanden TR Series W/O Notched Race - 18mm Thick • Nippondenso SC06E 	30	47	18	
-	BG-424	-	Mitsubishi MSC90C / 105C Shaft Bearing	12	28	8	
-	BG-425	-	Mitsubishi MSC90C / 105CVS Pulley Bearing	40	55	24	
-	BG-426	-	<ul style="list-style-type: none"> • Nippondenso SC08C Pulley Bearing • Sanden PXV16 Pulley Bearing 	35	52	20	
-	BG-426	-	Nippondenso SC08C Pulley Bearing	35	52	20	
-	BG-427	-	Tama TM31 OEM Pulley Bearing	40	68	30	
-	BG-428	-	FS10 / LV1 / Seiko Seiki Pulley Bearing	32	47	18	
-	-	BG-630	Nippondenso SCS06C	30	47	12	